

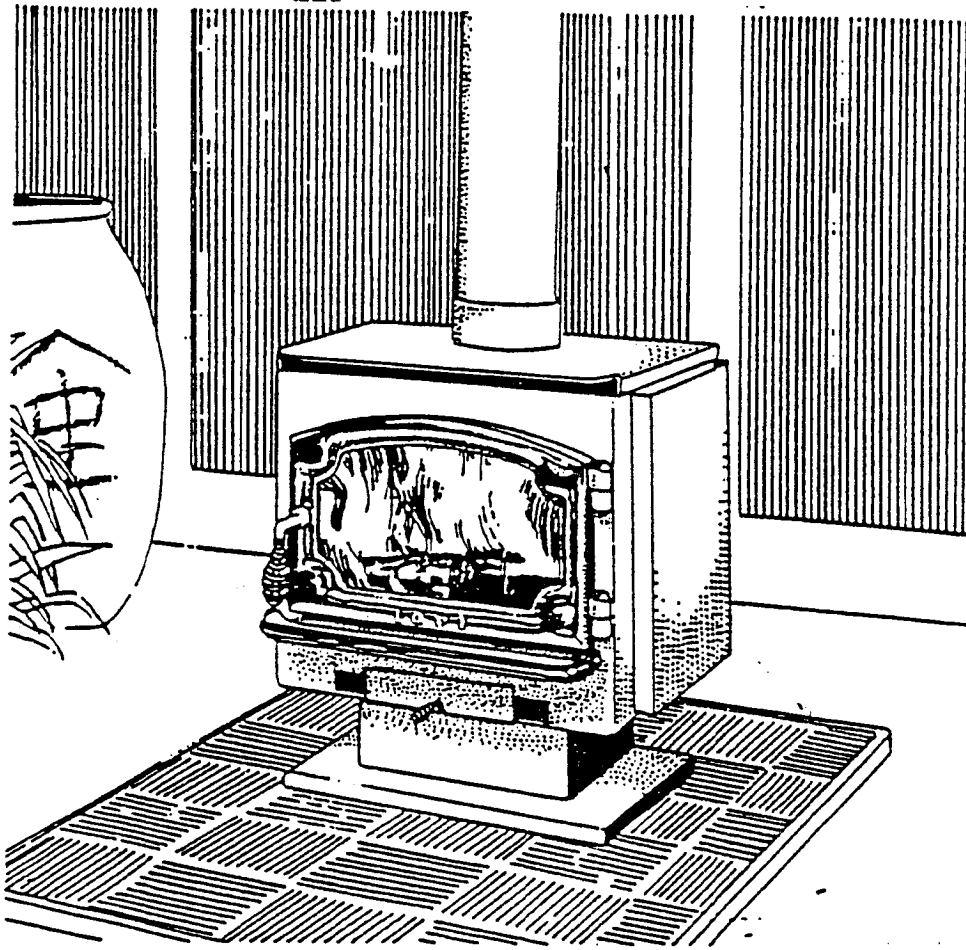
OWNERS MANUAL

PREMIER ANSWER SERIES

MODELS: PA1, PA2, PA3, PA4, PA5

PREPARATION, INSTALLATION, OPERATION AND MAINTENANCE BOOK

JUNE "88"



I.C.B.O. NO: NER 219

TESTED TO UL 907, 127, AND 1482 (U.S.A.)

ULC S628, ULC S627, AND CSA B 366.2 (CANADA)

GENERAL INFORMATION ALL MODELS:

FLUE COLLAR:

The first piece you will need to assemble will be the FLUE COLLAR and FLUE CAP. You have the option of installing the Flue Extensions and Cap as either a TOP or REAR VENT stove. Please note what type of flue is required for your particular installation.

1. Freestanding stove can be either top vent or rear vent (Residential only).

2. Hearth stove requires rear vent in all applications.

3. Both masonry and Z.C. may be top or rear vent.

NOTE: MASONRY INSTALLATIONS: Rear vent with or without a DFC or positive connect. Top vent DFC or positive connect only***.

NOTE: Z.C. Inserts top or rear vent must be installed with a maximum 6" stainless steel liner running entire length of fireplace chimney.

4. Mobile home top vent only.

DFC OR POSITIVE CONNECTION INFORMATION

For inserts being installed into masonry fireplaces, minimum chimney height 15', minimum inside liner dimension of 64SQ/IN.

If your chimney liner exceeds 120SQ/IN you will be required to install a direct flue connection (DFC) or a positive flue connection (completely relining the chimney). Please consult your dealer for information on DFC or positive flue connections.

NOTE: (DFC) REQUIRED FOR ALL INSERT INSTALLATIONS IN CANADA.

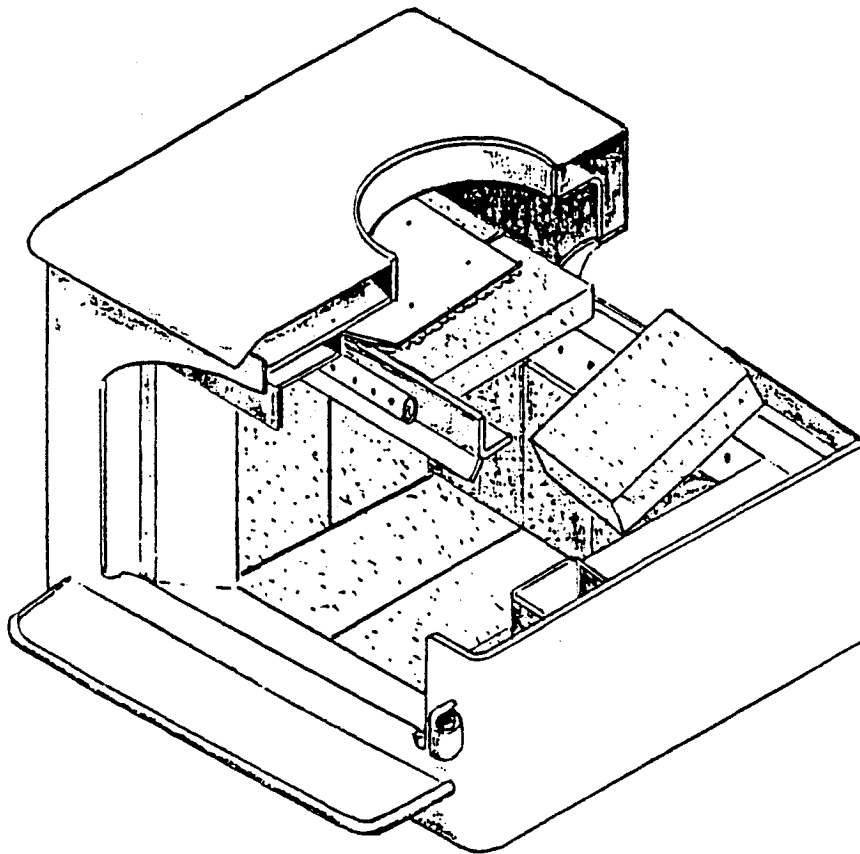
NOTE: COMPLETE RELINING OF THE CHIMNEY SHOULD BE CONSIDERED WITH LARGE CHIMNEY FLUE SYSTEMS (SYSTEMS THAT EXCEED 120SQ/IN) AS THIS WILL AID IN MAINTAINING A CONSISTANT DRAFT GREATLY IMPROVING THE PERFORMANCE OF THE UNIT.

Locate the three 1/4-20 x 1" Hex Bolts and the 3 Flue Collar Support Clips. From the inside of the stove position the clips and bolts into coupler nuts that have been welded onto the Flue Collar Extension. Make sure that the clips have the long ends facing outwards. Secure the pieces down evenly until tight.

Finally, take the Flue Cap and position it over the top or rear flue opening from the OUTSIDE. Now from the INSIDE position the Flue Cap over the fiberglass lined flue opening (To install the fiberglass tape simply remove the backing paper from the tape and apply it evenly around the edge of the flue collar stubs) with the 1/4-20 x 1-3/4" hex Head Screw. Tighten until seal is secured. Take care not to dislodge fiberglass channel tape during installation.

BAFFLE INSTALLATION:

The baffle brick are installed by sliding the brick up into the baffle frame. Simply slide the bricks one at a time up and toward the rear of the stove then pull forward and center them between the rear and front angle frames (see illustration below).



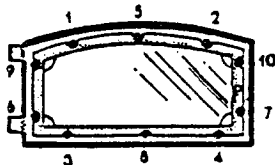
1. Place the cast retainer face down so the inges face out to the right side (see illustration). Next place the gasketed glass into the cast retainer. If the glass is etched, the etched surface is facing out toward you. The glass fits snugly within the recesses of the cast retainer.

2. Next position the door shell over the top of the glass and retainer. Once the shell has been positioned over the glass and retainer, squeeze all three pieces tightly together with both hands and gently flip over. Be carefull not to dislodge any of the pieces.

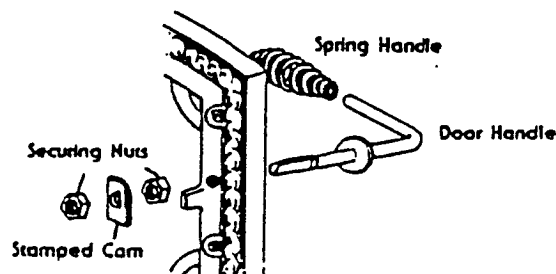


3. Once the door parts have been flipped over, adjust the cast retainer so the securing holes on the retainer align with those on the shell Door. secure the door, glass and retainer together with the 10 self-tapping screws. Tighten screws in the configuration shown. Tighten the screws in an even manner to ensure equal distribution of pressure on the glass. Failure to do so could result in glass breakage.

4. Once the door is assembled, place the hinge pins into the door and hang the door onto the face of the stove.

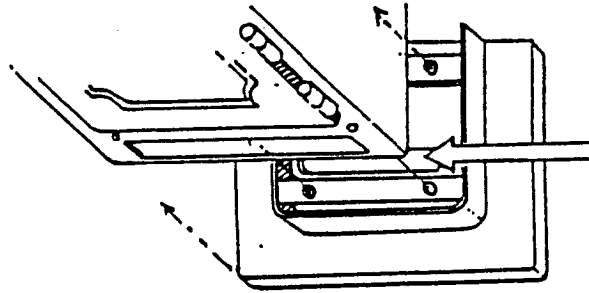


5. Finally assemble the door handle. To do this, first swing the door open and run the door handle throught he handle hole in the door. Next take one of the securing nuts and tighten it down with your hand until snug. Then place the cam over the shaft as shown and tighten remaining nut down on door handle shaft.



PEDESTAL BASE INSTALLATION:

REQUIRED FOR MOBILE HOME INSTALLATION OR OPTIONAL FOR RESIDENTIAL INSTALLATION.

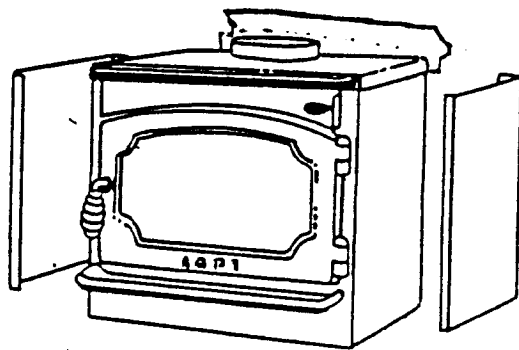


The pedestal base comes boxed and includes hardware for its installation. This consists of 4 bolts.

Simply align the stove onto the pedestal base matching the prepunched holes. Entering from the rear and front of the pedestal, run the bolts from the bottom up into the inside of the convection chamber and using a 5/16" socket wrench, tighten the bolt. You may wish to place a drop or two of "lock tight" on the thread before threading the bolt.

MOBILE HOME/ REDUCED CLEARANCE/ALCOVE SHIELD INSTALLATION

To install the mobile home/ clearance reduction/ alcove shields simply align the mounting holes on the shields with the mounting hole on the stove and secure with self threading screws provided with the shield kit. The rear shield simply attaches to the top mounting holes on either side of the rear of the stove. (See Illustration below)



INSTALLATION OF EXTERIOR CHIMNEY PIPE

If you own a masonry chimney that meets local building codes it can be used as a flue to vent your woodstove. Be sure to have your chimney inspected by a qualified professional before beginning installation. If however, your chimney is not constructed with a liner, it should NOT be used in conjunction with your woodstove.

Maximum inside Diameter of the Chimney or Chimney Liner is 8"
Minimum inside Diameter is 6".

For a direct connect into a masonry chimney consult with your local woodstove dealer or chimney sweep, as they are the professionals in your area.

INSTALLATION INSTRUCTIONS: FACTORY BUILT CHIMNEY AND CONNECTOR PIPE

This unit must be installed only with a LISTED High Temperature (H.T) chimney, complying with U.L. 103 HT1985.

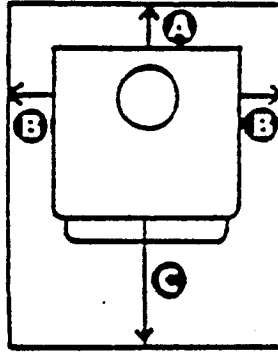
1. Select the location for your stove and set the unit in place. Refer to the "Clearances to Combustibles" and ensure that your placement of the unit is within the clearances indicated.
2. Suspend a "plum bob" from the ceiling so that its tip is in the exact center of the flue collar. Mark this point on the ceiling.
3. Determine that the area above the ceiling is clear for cutting (i.e. that the hole for the chimney will not involve cutting any joists), and install the chimney following the instructions provided by the chimney manufacturer.
4. Mark the outline of the unit on the floor and move the unit aside. Refer to the "Hearth Dimensions" and outline the location of the hearth pad.
5. The chimney must be the same size as the flue collar on the stove 6" (150mm). The chimney must be listed as a Class A Factory-built residential type and suitable for use with solid fuel.
6. Any horizontal sections of stove pipe should incline upward from the stove at least 1/4" per foot of pipe.
7. Keep the length of the pipe as short as possible preferably less than 10 feet (3.05m).
8. If an exterior chimney is desired, use the appropriate components for installing the chimney through the wall. Instructions for installation are packaged with the support.
9. Do not connect unit to a chimney that is serving another appliance.

FLOOR PROTECTION

You must install your new LOPI Answer on a non-combustible floor pad.

Any Hearth pad used must be large enough to extend at least 18" (456mm) beyond the front of the stove face and at least 8" (203mm) beyond the back and both sides of the unit.

- A. Back 8" (203 mm)
- B. Side 8" (203 mm)
- C. Front 18" (457 mm)



This pad must be of non-combustible construction. Please consult your LOPI dealer for suggestions on the different types of pads available.

CLEARANCES TO COMBUSTIBLES FOR FREESTANDING MODEL #PA1

LOFI's MODEL PA1 Freestanding stove has been thoroughly tested with single-wall pipe to an unprotected combustible wall. Any installation not using the specified pipe or using a different listed wall protection must be approved in writing prior to installation by your local Building Inspector.

NOTE: Clearances can be reduced by other means than those described in this manual with the use of UL, ULC, CSA, WH approved clearanced reduction system, or NFPA 211 (NATIONAL FIRE PROTECTION ASS.) guidelines.

Please follow the manufacturer's suggested clearances for these systems,

Consult your local Building Inspector as to the specific rules and regulations concerning usage of a such a system.

CLEARANCES TO COMBUSTIBLES ARE THE MINIMUM DISTANCES ALLOWED TO ANY COMBUSTIBLE OBJECT OR WALL. THESE CLEARANCES MUST BE STRICTLY MAINTAINED. FAILURE TO FOLLOW THESE GUIDELINES WILL PRESENT A SERIOUS SAFETY HAZARD.

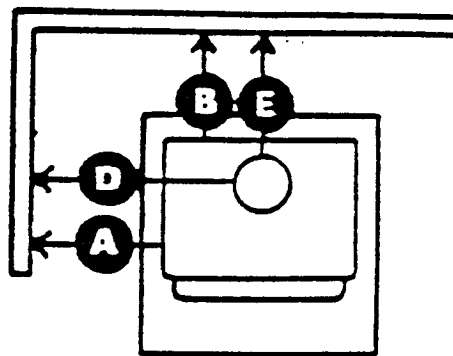
MODEL PA1 TOP FLUE

Measured from unit.

A-Sidewall-18"/455mm
B-Backwall-16"/410mm
C-Corner-18"/455mm

Measured from pipe.

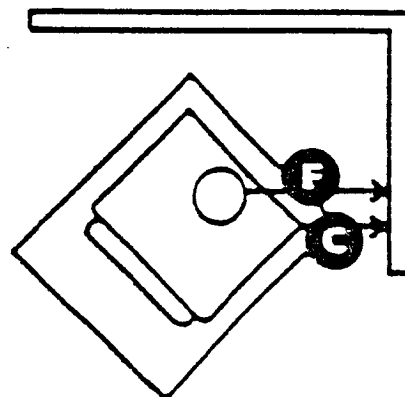
D-Sidewall-25.5"/650mm
E-Backwall-19"/485mm
F-Corner-27"/685mm



TOP FLUE

With pipe shield.

A-Sidewall-18"/455mm
B-Backwall-9.5"/240mm
C-Corner-18"/455mm
D-Sidewall-25.5"/650mm
E-Backwall-12"/305mm
F-Corner-27"/685mm



MODEL PA1 REAR FLUE

A-Sidewall-18"/455mm
B-Backwall-29"/735mm
C-Corner-18"/455mm
D-Sidewall-25.5"/650mm
E-Backwall-19"/485mm
F-Corner-27"/685mm

PREMIER ANSWER HEARTH STOVE INSTALLATION

MODEL # PA2

THE MODEL PA2 HEARTH STOVE CAN BE INSTALLED AS A REAR VENT ONLY

To assemble your Hearth Stove you will need to attach either the 2" or 11 1/4" raised pedestal base.

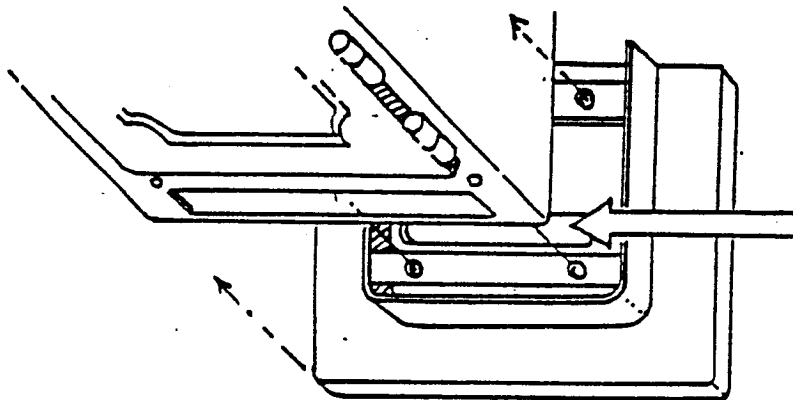
If you wish to install this unit in a metal fireplace (Zero Clearance) you must install a LOPI Mantle/Heat Deflector.

PEDESTAL ASSEMBLY

If you have purchased the 2" pedestal base, you will be required to install this unit on a 4" raised brick hearth.

The pedestal comes boxed and includes hardware for its installation . this consists of 4 bolts.

Simply align the stove onto the pedestal base matching the prepunched holes. Entering from the rear and front of the pedestal, run the bolts from the bottom up into the inside of the convection chamber and using a 5/16" socket wrench tighten the bolt. You may wish to place a drop or two of "LOCK TIGHT" on the threads before threading the bolt.



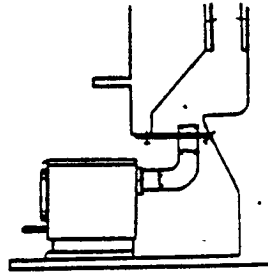
INSTALLATION OF THE HEARTH STOVE INTO A MASONRY FIREPLACE

NOTE: Alterations to the Hearth Heater are not allowed. Do not connect to existing air duct system.

Installing your Hearth Heater requires some preparation and home-work. LOPI's Answer Hearth Heater is intended for installation in accordance with the Standards for Chimney, Fireplaces and Vents NFPA No 211 with a direct flue connection to the throat of the chimney liner. SEE YOUR DEALER FOR INFORMATION

NOTE: BEFORE INSTALLING YOUR HEARTH HEATER YOU WILL NEED TO REMOVE OR LOCK THE EXISTING FIREPLACE DAMPER IN THE "OPEN" POSITION.

DIRECT FLUE CONNECT INFORMATION:



INSTALLATION USING A DIRECT CONNECTOR

1. Lock open or remove the existing fireplace damper.
2. Measure the smoke chamber opening and cut the connector plate to fit it allowing enough overlap to secure the plate to the lintel and to the masonry. Making a cardboard template first is highly recommended.
3. Next, cut a 6" (150mm) diameter hole in the connector plate for the connector pipe.
4. Install the connector plate to the firebox smoke chamber opening. Use concrete lag bolts to secure the plate. Seal the edges of the plate with gasket or furnace cement.
5. Run either a 6" (150mm) chimney connector or flexible pipe from the rear flue on the hearth heater up through connector plate.
6. Secure the pipe to the hearth heater flue with two sheet metal screws.
7. Secure and seal the flue pipe to the connector plate with furnace cement.
8. Removal for purposes of inspection or cleaning is opposite of installation.

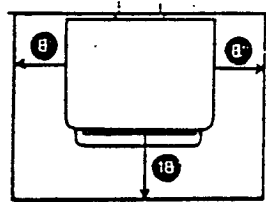
WARNING: CARELESS INSTALLATION IS THE MAJOR CAUSE OF SAFETY HAZARDS. CHECK ALL LOCAL BUILDING AND SAFETY CODES BEFORE INSTALLATION OF THE UNIT.

Before installing, check and clean your masonry chimney system thoroughly. If in doubt about its condition, seek professional advice from your authorized LOFI dealer. Also make sure that your fireplace meets the Clearance to Combustibles for your installation. **FAILURE TO INSTALL YOUR HEARTH HEATER TO THESE CLEARANCES MAY PRESENT A SERIOUS FIRE HAZARD.**

WARNING: DO NOT REMOVE BRICK OR MORTAR FROM THE EXISTING FIREPLACE TO INSTALL YOUR HEARTH HEATER.

FLOOR PROTECTION FOR HEARTH HEATER PA-2

Floor protection or fireplace hearth must meet the standards required for Clearances to Combustibles.



If you are going to use the 2" (50mm) raised pedestal base you will be required to install this unit on a 4" (103mm) raised brick hearth that extends 18" (411mm) from the face of the fireplace opening. If you are going to use the 11 1/4" raised pedestal base, your fireplace hearth must be of non-combustible construction and extend 18" (411mm) from the face of the fireplace opening.

BOTH installations, whether using a 2" or 11 1/4" pedestal base will require a non-combustible (any style) floor protection that extends 18" from the face of the Hearth Heater and 8" from the sides of the Hearth Heater.

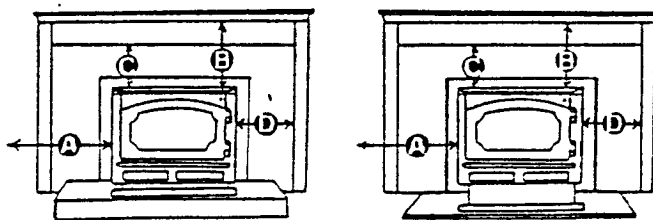
MODEL PA-2 MASONRY HEARTH MOUNT CLEARANCE TO COMBUSTIBLES

A-To Side Wall 20"/510mm w/Side Shield's 12"/305mm.

B-To Mantle 21"/553mm w/Mantle Shield 12"/205mm.

C-To Top Facing 19"/485mm w/Mantle Shield 7"/180mm.

D-to Side Facing 20"/510mm w/Side Shield 8.5"/216mm



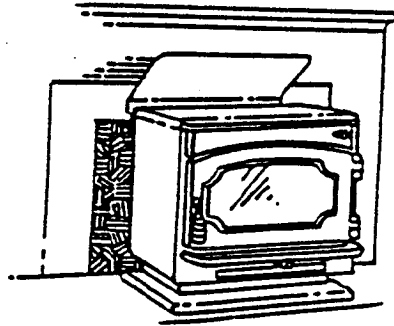
MODEL PA2 HEARTH HEATER INSTALLATION INTO A METAL FIREBOX (ZERO CLEARANCE) U.S.A. ONLY

LOPI's Model PA2 has been tested and approved for installation in several brands of listed Factory Built Fireplaces.

HEAT DEFLECTOR/MANTLE SHIELD

When installing a metal firebox you will need to install a LOPI Heat Deflector/Mantle shield. This deflector simply attaches with the use of 2 sheet metal screws to the back of the unit. (see illustration).

THIS SHIELD MUST BE USED WHEN INSTALLING INTO A FACTORY BUILT FIREPLACE.



HEAT DEFLECTOR/MANTLE SHIELD

To connect the PA2 to the fireplace, first remove the damper from the fireplace, next measure the inside diameter of the zero clearance fireplace chimney. Once you have this measurement you will need to purchase from your local woodstove dealer a pipe adapter in which to connect the 6" flue pipe from the Hearth Heater to the fireplace chimney.

Attach the pipe adapter directly to the fireplace chimney. Secure in place with at least 2 sheet metal screws. MAKE SURE ALL PIPE CONNECTIONS ARE FASTENED SECURELY.

Now, using either 6" single wall pipe and elbows or 6" flex pipe, attach the pipe adapter in the fireplace to the stove. Again, attach the pipe connector to the flue pipe and the flue pipe to the stove flue collar with at least two sheet metal screws.

LOPI's PA2 with Heat Deflector/Mantle Shield is approved for installation in the following Zero clearance (metal) fireplaces.

MAJESTIC MODELS: M-28, M-28A0, M-36, L-36, MD-36, MD-36A9, M-42, MD-42 MD-42L.

SUPERIOR MODELS: HC-3320, HC-3820, HC-4320, RC-3310, RC-3810, RC-4210, RD-3300, RD-4300, CF-3860, MODEL 836, SHC-38, SHC-43, EZO-36, EZO-42, B948, B938, B1038, B-1043, B-1238, B-1243.

MARCO: DWF-3652, DWF-36G02, DWF-36G, DWG36G0, DWF-36F, DF41G02, DF41F, DF41D.

SECTION #4

MODEL PA3 FIREPLACE INSERT ASSEMBLY & INSTALLATION INSTRUCTIONS

The Model PA3 insert is designed to be installed in MASONRY FIREPLACES ONLY!!!!!!!

MINIMUM FIREPLACE DIMENSIONS

Width: 24" (617mm)

Height: 21" (540mm)

MINIMUM

Chimney Size:

Height: 15'

Maximum inside Flue Diameter: 120SQ/IN.

Minimum inside Flue Diameter: 64SQ/IN

The PA3 is designed to be primarily installed as a rear vented unit with the use of the Answer damper kit.

If you wish to install the PA3 as a top vent it must be installed with a POSITIVE CONNECT KIT. Check with your local woodstove dealer for information regarding installation of a positive connect kit. Also if your maximum inside flue diameter exceeds 120 sq/in's you will have to install a positive or direct flue connect (DFC)

INSERT MODEL PA3 FLOOR PROTECTION

Your floor protection or fireplace hearth must meet the following clearance requirements:

The non-combustible hearth (raised or flush) should extend at least:

A-8" (20.3cm) to both sides of the insert.

B-18" (45.7cm) in front of the insert face.

CLEARANCES TO COMBUSTIBLES MODEL PA3 INSERT

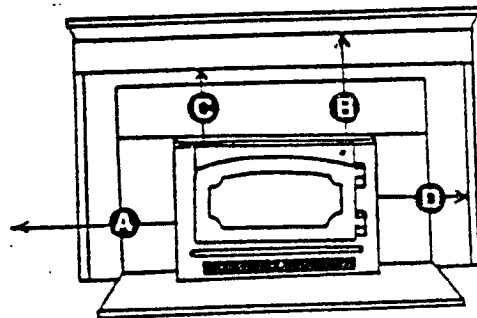
Before installing your insert make sure your fireplace meets the Clearance to Combustibles set forth in this section. FAILURE TO INSTALL YOUR INSERT TO THESE CLEARANCES MAY PRESENT A SERIOUS FIRE HAZARD.

A-TO SIDEWALL - 25"/635MM.

B-TO MANTLE - 15-1/2"/395MM.

C-TO TOP FACING - 12"/305MM.

D-TO SIDEWALL FACING 12"/304MM.



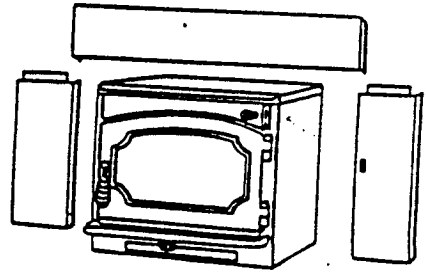
HEATILATOR MODEL: MARK 123 30 36
PA2 HEARTH HEATER CLEARANCE TO COMBUSTIBLES IN FACTORY BUILT
FIREPLACES * Requires Mantle/Heat Deflector.

- A-To Side Wall 20"/510mm w/ Side Shield 12"/216mm.
- B-To Mantle 12"/305mm.
- C-To Top Facing 7"/180mm.
- D-To Side Facing 9"/230mm.

PANEL ASSEMBLY

One of the key advantages of the FA3 is its adaptability. It can be installed in any position, from an extended unit, extending a maximum of 12"/308mm from the firebox, to a unit that is flush with the face of the fireplace.

To install first decide how you wish to install the unit into the fireplace. Keep in mind that the farther the unit extends into the room, the more radiant heat you will get.



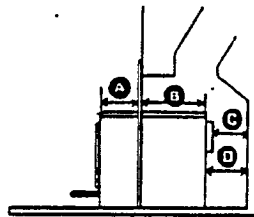
Panel Spacing Specifications

A-Maximum extension 12"/546mm.

B-Minimum depth into fireplace 4"/103mm.

C-Minimum distance from the flue to the back of the fireplace (rear vent 5".(128mm).

D-Minimum distance from back of the fireplace (top vent 1"/26mm).



Before starting, set the unit in front of the fireplace. Take the panels and set them together over the unit. (Side panels slide into the top panel). Adjust the panels over the unit to the desired position.

Once you have decided on the best position of the panels, measure the panels so they are straight and level to the unit. Now mark with a pencil the securing holes at the base of each panel. (See illustrations.) And at the top of each side panel.

NOTE: For the bottom holes, prop the stove up with a 2 x 4 OR similar means to allow accessability to drill the holes.

Once the holes are drilled, attach and secure the panels to the unit. A 3/8" racket with an extention is recommended

PANEL TRIM ASSEMBLY

1. Place trim face down on floor as it would appear on the insert.
2. Place the corner brackets in the appropriate slots. Small corner brackets go to the front face of the trim, large corner brackets with screw holes, go in back.
3. Once in place, insert set screws and firmly secure with allen wrench.
4. Slide completed trim over the panels.

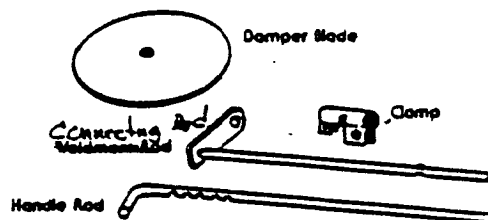
OPTIONAL DAMPER KIT INSTALLATION

(Rear Vent Only)

A Damper Kit is an optional component for the Answer PA3 fireplace insert installed in the rear vent configuration. The damper, when installed, will allow greater control over the fire.

The damper kit consists of:

- 1. 3/8" x 18" Handle Rod
- 1. 3/8" x 15" ~~Weldment Bar~~ ^{Connecting Rod}
- 1. Damper Plate
- 1. Hardware Kit



The Hardware Kit Consists of:

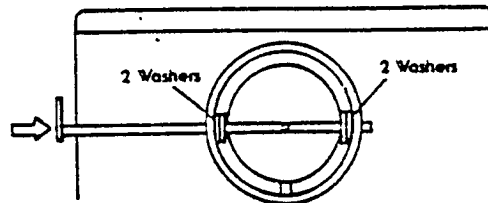
- 1ea 10-32 x 1" Socket Head Screw
- 2ea 1/4-20 x 3/4" Hex Head Screws
- 1ea Clamp
- 4ea 3/8" Washers
- 2ea 1/4-20 Jam Nuts
- 2ea 3/8" x 3" Carriage Bolts (Leveling Bolts)
- 1ea 10/32" Jam Nut

To install, first make sure the panels have been firmly secured to the firebox. Next remove the 2 button plugs located on each side of the flue collar.

Now locate the Connecting Rod, Damper Plate, 10 x 32" x 1" Socket Head Screw, 10/32" jam nut and the 4 ea 3/8" washers.

Take the Connecting Rod, Damper Plate 2-3/8" Washers.

First run the connecting rod into the flue collar from the right side of the unit. Position 4 washers onto the connecting rod as shown in illustration:

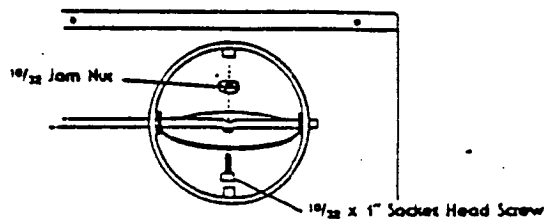


Connecting rod 10/32" Jam Nut Damper Plate 10/32" Socket Head Screw.

Next position the Damper Plate between the 2 sets of washers and run the 10/32" Socket Head Screw up from the bottom of the Damper Plate and through the connecting rod. Secure tightly with the 1/4"/20 Jam Nuts.

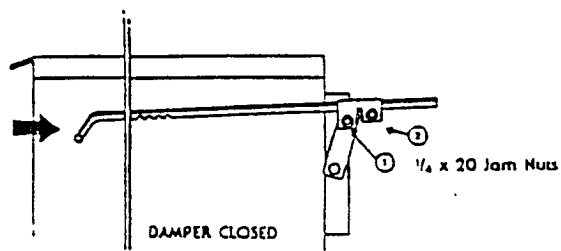
Run the Handle Rod through the face of the right panel so the handle sets on the first notch.

Position the clip over the rod and align the flat bar on the connecting rod with the clip as shown in the illustration. Now run both 1/4-20 hex head screws through the clip from the left side.

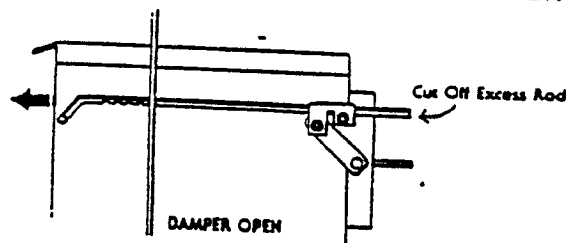


Secure the 2 screws with the 1/4-20 jam nuts. The screw holding the flat bar of the connecting rod (1) should be snug, but not too tight, to ensure that the two pieces will pivot easily.

The second screw (2) should be tightened down securely to hold the damper bar from sliding off the clip.



Now test the damper. Take the handle rod and move it back and forth. If everything is put together correctly, the damper should move easily from the open to the closed position. Finally, twist or screw the spring handle onto the handle rod.



You may find that the handle rod may extend beyond the end of this clip. The distance this rod sticks out will depend on the panels position on the unit. If needed remove any excess rod by cutting it off with a hacksaw.

INSTALLATION INTO FIREPLACE

Once the unit has the panels and damper installed, you can position it into the fireplace. You may wish to place some cardboard between your stove and hearth to prevent damage to the stove and hearth.

LEVELING BOLT ASSEMBLY

It may be necessary to level the unit in the fireplace if the fireplace is stepped down. To do this, you will need to locate the 2ea 3/8" x 3" carriage bolts located in the damper hardware kit.

To install, simply tip the stove forward and block up on a 2*4 or similar means. Then screw the carriage bolts into the 2 holes at the rear back corners of the stove. Measure the drop in the fireplace and adjust the carriage bolts to compensate for the drop. Return the stove to the upright position.

To make the fireplace air tight remove the fiberglass strip from the stove and install it between the back of the panels and the front of the fireplace. Allow a little of the insulation to stick out past the edge of the panels.

Now, carefully position the unit into the fireplace so the panels meets the fireplace opening. With a screwdriver, tuck the exposed insulation behind the panels for an airtight fit.

Check for a good seal by holding a match around the perimeter of the panels to determine if any drafts are occurring. If a leak is detected fill the spot with more insulation and recheck.

The PA4 Top Vent Freestanding model can be placed in an alcove using the optional LOP-I alcove shields and a listed pipe shield. When installed with the shields the clearances to combustibles are reduced to:

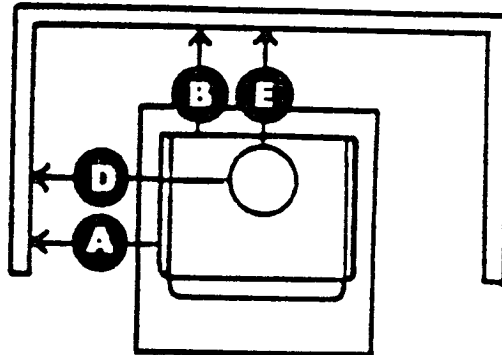
- A-Sidewall-13"/330mm
- B-Backwall-7.5"/190mm
- C-Sidewall-22'0"/560mm
- D-Backwall-11.5"/290mm

Minimum Alcove Measurements.

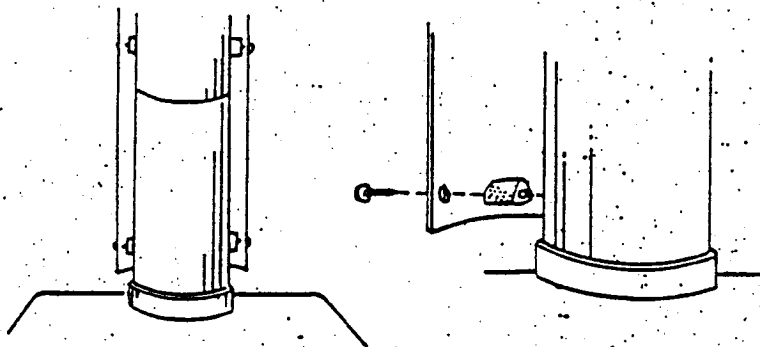
Minimum Ceiling - 6'/185m

Maximum Depth - 4'/1.23m

Minimum Width - 51"/1.30m



*The pipe shield can be purchased at your local woodstove dealer. Follow manufacturers installation instructions.



SECTION #2

PREMIER ANSWER MOBILE HOME INSTALLATION

MODEL # PA4

The Premier Answer stove has been designed and manufactured to meet specifications required for installation in Mobile Homes and for Conventional Homes using outside air.

INSTRUCTIONS FOR PLACEMENT FOR INSTALLATION OF YOUR PREMIER ANSWER STOVE IN A MOBILE HOME

THE STRUCTURAL INTEGRITY OF THE MOBILE HOME FLOOR, WALLS AND CEILING/ROOF MUST BE MAINTAINED.

The Premier Answer must be installed according to the following requirements to meet Housing and Urban Development (HUD) Mobile Home approval.

1. Under NO situation shall this unit be installed in a sleeping room.
2. As all mobile homes are built air tight, outside air must be used as the ONLY source of combustible air.
3. The stove must be securely installed to the mobile home floor and hearth anytime the mobile home is moving.
4. The stove must be placed on a non-combustible pad.
5. The weight of the stove, chimney connection and hearth pad must be spread over an area so as not to exceed the 40.lbs. per square foot floor load limit.
6. This stove requires a UL listed chimney and flue pipe with spark arrestor and it must be attached directly to the stove.
7. The minimum ceiling height in the room in which the Premier Answer stove is installed can not be less than seven (7) feet.

The Premier Answer PA4 mobile home model must be installed on a pedestal with the side and rear shields in combination with one of the following chimney systems when installing in a mobile home or for reduced clearance residential installations.

IN USA:

1. Duravent model DVL connector with Duraplus chimney.
2. Security model DP connector with Security model ASHT or S2100 chimney.
3. Selkirk Metal Bestos model DS connector with model SSII chimney.
4. Ameritec DBSP connector with model HT chimney.
5. GSW model super chimney twentyone connected directly to unit.

IN CANADA:

1. Security Model DP connector with security S2100 chimney.

See specific chimney installation instructions for details of installation.

Your PREMIER ANSWER PA4 comes from the factory set up to use room air for combustion. You will have to convert it to outside air for installation into a mobile home. The following instructions will explain to you how this is done.

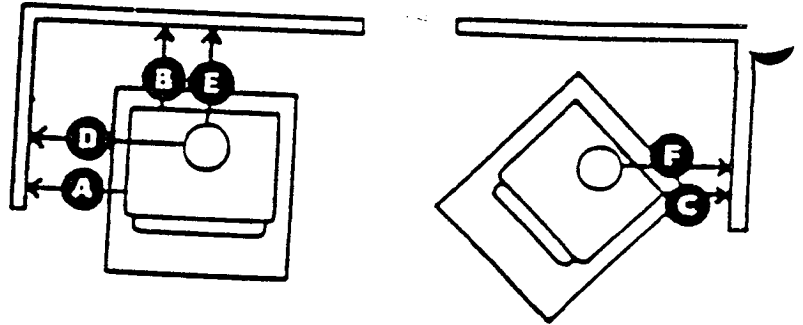
OUTSIDE AIR CONVERSION:

1. To remove the factory installed air control cover, Carefully tip the stove onto its back. Then using an 1/8" drill bit, Drill through the two pop rivets at the front of the air control cover. Now remove the air control cover by sliding it off over the air control rod. Push the remaining pop rivet pieces through the holes. Slide the optional cover plate (located in the hardware package) over the air control rod and line up the four holes in the cover flange with the corresponding holes in the bottom of the stove. Using 1/8" pop rivets, Rivet the cover to the stove. Be sure the control rod moves smoothly through the hole in the cover plate.

2. Next remove the factory installed outside air hole cover plate located on the bottom of the stove. Simply remove the four (4) pop rivets as in step #1 and discard the cover plate. This will allow outside air to flow up through the pedestal into the stove from outside.

MODEL PA4 TOP FLUE;
CLEARANCE TO COMBUSTIBLES

- A-13"/330mm
- B-7.5"/190mm
- C-7.5"/190mm
- D-21.5"/550mm
- E-11"/280mm
- F-18.5"/470mm



FLOOR PROTECTION

If you intend to install your new Premier Answer stove on anything other than tile, stone flooring, or any other non-combustible material, you will be required to purchase and install a non-combustible hearth pad.

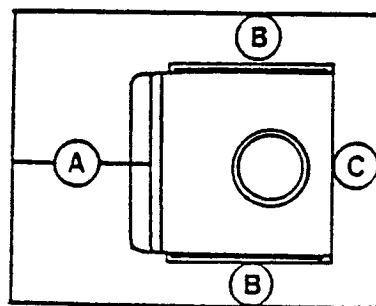
Any hearth pad used must be large enough to extend at least 18" (460mm) beyond the front of the stove face and must extend at least 8" beyond both sides of the stove. The back wall pad extension must equal the clearances to the combustibles of the unit or 8", whichever is less.

This pad must be of non-combustible construction. Please consult your LOPI dealer for suggestions on the different types of hearth pads available.

Position this pad by first marking the outline of how the unit will fit on the floor. Refer to "Clearances to Combustibles" for your stove. Next outline the position of the hearth pad based on your stove's hearth extension requirements.

HEARTH REQUIREMENTS MODEL PA4

- A. Hearth extension in front of stove 18" (460mm)
- B. Hearth extension to side of stove 8" (203mm)
- C. Hearth extension to back of stove 8" (203mm) or to combustible wall whichever is less.

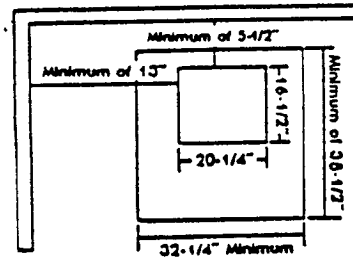


HEARTH PAD INSTALLATION FOR MOBILE HOMES (OUTSIDE AIR).

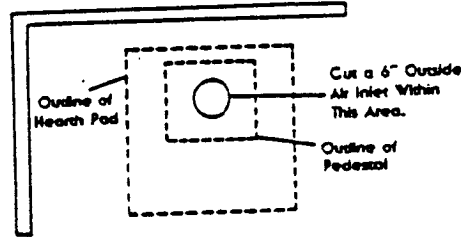
OUTSIDE AIR INTAKE INSTALLATION CAN BE APPLIED TO CONVENTIONAL HOME INSTALLATIONS AS WELL.

To allow for outside combustion air, you will be required to cut a matching hole in the hearth pad and floor.

To begin, first place the hearth pad in the desired location. Mark the pad's position on the floor and remove it. Next, referring to the required clearances for the unit, mark how the stove will be situated on the hearth pad. You should have a 20-1/4" x 16-1/2" area marked on the pad as to the stove's position.



Next, measure in 8-1/4" from the front of the stove mark and 10" from the side of the stove mark. This will give you the CENTER of your round 6" hole. Now draw your 6" hole onto the floor using your center point as your guide. This will be your combustible air intake. Carefully cut and remove this section of floor. Next, transpose this same hole to the hearth pad and cut it out.



Now position the provided mesh screen over the hole in the floor as a guard against rodent entry. Secure the screen with heavy duty staples.

Finally, replace and align the hearth pad and the stove over the air intake along the lines previously marked.

Take the insulation strip found within the pedestal box and position it along the open backside of the pedestal base. This cuts off any room air from entering the unit.

SECURING THE STOVE (THIS SECTION IS APPLICABLE ONLY IF THE MOBILE HOME AND PREMIER ANSWER ARE TO BE MOVED).

YOU WILL NEED TWO 1/4" X 4" LAG BOLTS & A 3/16" DRILL BIT. These will be used to anchor the stove securely to the floor of the mobile home.

1. With the stove position mark the hearth pad using the two holes in the pedestal base as a guide.
2. Remove the stove and with the 3/16" drill bit, drill through both the hearth pad and the mobile home floor.
3. Realign the stove and secure with 1/4" bolts.

SECTION #5

"ZERO CLEARANCE INSERT" INSTALLATION INSTRUCTIONS

MODEL PA5

MATERIALS SUPPLIED FOR INSTALLATION

1. Answer Z.C. Insert Manual
2. Standard PREMIER ANSWER body.
3. Chimney Block off Plate (26 Gauge Galvanized steel 14" x 14" with a 6-1/4" hole in the center).
4. Liner Support Bracket (6-1/2" Diameter) with 3" Flanges.
5. Twelve 1/8" x 1" Sheet Metal Screws.
6. Four 1/4 - #20 x 3/8 Self Tapping Screws.
7. Three 3/16" x 1" Sheet Metal Screws.

OPTIONS:

1. Panel and Panel Trim Sets.
2. Blower.
3. Front Support Legs (6" Adjustable to 6.75")

TOOLS AND MATERIALS NOT SUPPLIED:

1. Drill, 1/8" Drill Bit, 15/64" Drill Bit (use of cutting oil is recommended).
2. Hammer.
3. Screw Driver, Phillips and Standard.
4. Tin Snips.
5. Fencil, Straight Edge.
6. Hacksaw.
7. Gloves.
8. Open and Closed End Wrench Set (From 3/16" to 3/4").
9. Pliers.
10. Fireplace Cement.
11. 6" Stainless Steel Liner 26 Gauge (Flexible Liner is Recommended. Rigid Liner May Be Used, But Is Extremely Hard To Install When Offsets Are involved).
(Always use appropriate liner to stove adaptors).

APPROVED SIZING AND APPLICATIONS

Before starting, it is important to first measure your fireplace to ensure that the Answer Insert will fit properly and safely.

To do this, measure your fireplace as shown in Figure #1. Your fireplace must meet or exceed the following required measurements to be a flush installation:

Approved
Sizing:
A=30"
B=24"
C=17"
D=21"

Approved
Applications:
Marco
Majestic
Heatilator
Preway
Superior
Tempco

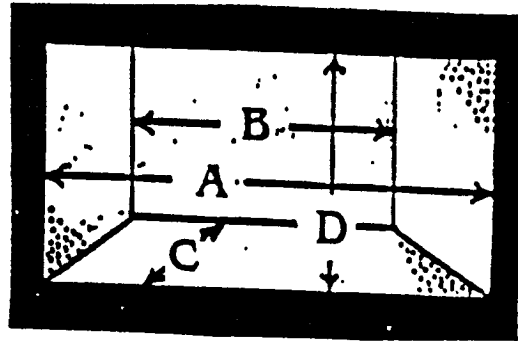


Figure #1

For extended installations, you must comply with the minimum measurements in Figure #1 at the furthest point of penetration of the Answer unit. The answer unit may extend a maximum of 16".

If the fireplace height (No. D) is too low in your particular model, you may remove the Smoke Shelf, Baffle Plate and the Damper Plate. (See Figure #2).

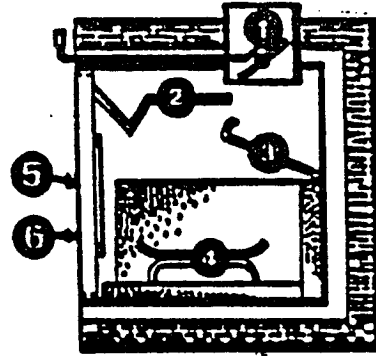
NOTE: If your Dimension "D" is less than 24", you will be required to install your Answer Insert in the rear vent configuration. (See installation instruction on rear and top vent installation).

If your fireplace is raised, you will also be required to support the front of the unit using the front support legs or similar means. (Contact your local dealer for more information on custom legs or brick).

ALTERATIONS AND MODIFICATIONS TO FIREPLACE

Because of the wide differences between fireplace brands and models, it would be difficult to list all the variations. Below we have provided a generic view of a typical Zero Clearance Fireplace to illustrate which parts may or may not be removed.

Parts that may be removed: (Figure #2)



1. Damper Plate (MUST BE REMOVED).
2. Smoke Shelf.
3. All Internal Baffles.
4. Grates (MUST BE REMOVED).
5. Doors.
6. Screens.

Figure #2

Parts that MAY NOT BE REMOVED or altered under any circumstances (Figure #3A):

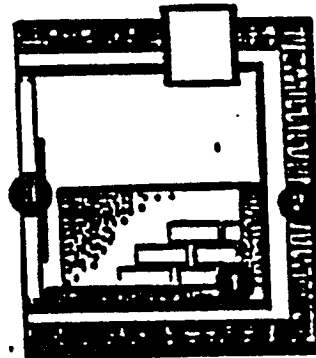


Figure #3A

1. Masonry Lining or Firebricks.
2. Any Insulating Materials.
3. Any Structured Rigid Frame Members (Metal, Sides, Floor, Door Frame, Face of Fireplace Etc....).

PANEL SIZING GUIDE

NOTE: The installation of panels is an option and is not required. You may choose not to install the decorative panels and trim. An alternative to using the decorative panel is to simply draw the fireplace screen closed around the unit.

If you choose to use the panels, you will need to measure your fireplace opening as shown in Figure #3B (below) and make note of these dimensions in order to determine the panel size. LOPI has available two panel sizes: Large and Small.

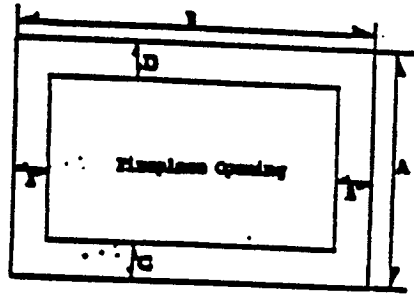


Figure #3A

The large size panels are 8" on both sides and 5" on the top and bottom. The Small size panels are 8" on both sides and 3" on the top and bottom.

When attached to the Premier Answer Body, these overall dimensions are (See Figure #4).

Large A= 30"	B= 37 3/8"	C= 5"	D= 5"	E= 8"
Small A= 26"	B= 37 3/8"	C= 3"	D= 3"	E= 8"

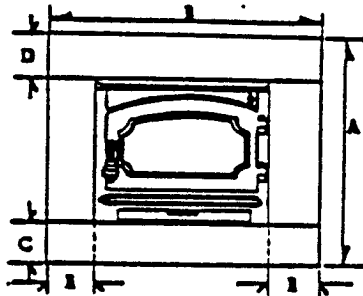


Figure #4

Match these dimensions to your fireplace to determine a proper fit.

NOTE: You may have to raise the Premier Answer unit to allow for proper fit of the bottom panel Dimension "C" or to allow complete coverage (which is not necessary) of the top Dimension "D". (Firebrick or clay bricks work nicely for this.)

NOTE: If your Dimension "C" = 1" or less, you may install your Premier Answer unit without the lower panel. But, you will have to trim the brass trim side pieces. (For instructions on this, please see the section on panel and trim installation on the last page.)

NOTE: The two panel sizes listed are the only sizes available from LOPI. If your fireplace requires panel sizes other than those available, you can have to have them custom made by your local sheet metal shop. (Contact your local dealer for more information.)

INSTALLATION INSTRUCTIONS

It is required that all applications of the Answer Insert into a Zero Clearance Fireplace, (Factory built fireplace) must be installed with a stainless steel liner fastened to the unit and running the length of the chimney system. For this, WE RECOMMEND A STAINLESS STEEL FLEXIBLE LINER 26 GAUGE. (Rigid Liner may be used, but is often harder to install.)

Step 1.

Once the Z.C. Fireplace has been stripped of all unnecessary parts (See Figure #2), You are ready to start the installation. First you must use the chimney block off plate provided (See Figure #5A) to gap between the fireplace chimney (A) and the 6" stainless steel liner you will be installing.

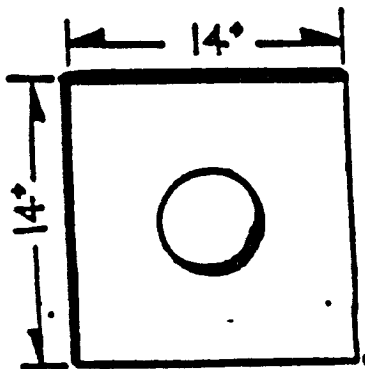


Figure 5A

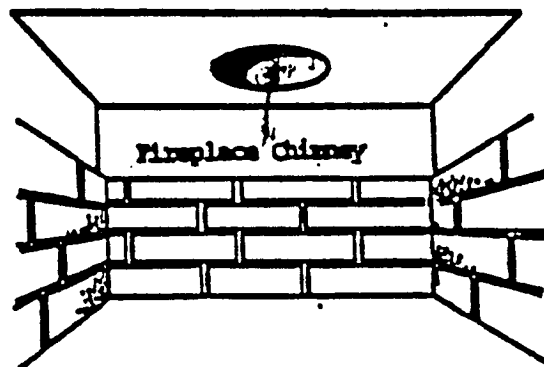


Figure 5B

Trim plate if necessary, but allow a minimum of 2" on each side of the plate than the outside dimension of the Chimney Flue diameter, in order to properly seal the gap between the chimney and the 6-1/4" hole.

Once the plate has been trimmed, you are ready to fit the plate into position; but first drill four 1/8" holes in the plate as shown in (Figure #6A). These holes will be used for mounting the plate to the inside of fireplace. When the holes are drilled, place the plate inside the fireplace over the chimney flue, making sure to center the 6-1/4" hole in the center of the chimney flue exit. Next, mark the 1/8" mounting holes on the inside top of the fireplace. Using a 1/8" drill bit, drill marked holes. (See Figure #6B) You are ready to install the chimney liner.

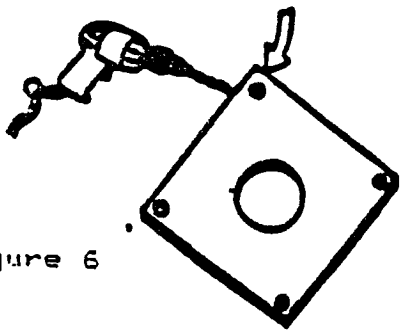


Figure 6

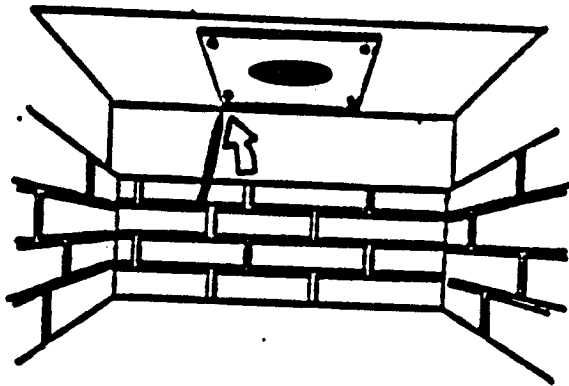


Figure 6A

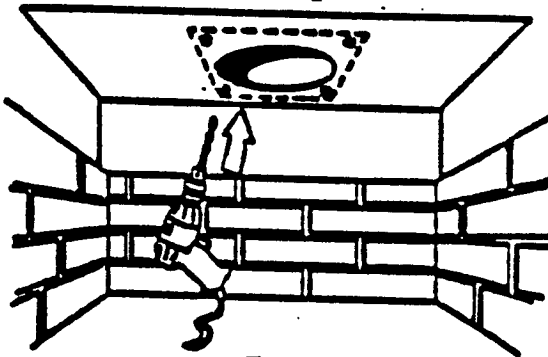


Figure 6B

Step #2.

We recommend using a 6" Flexible liner, (A Rigid Liner can be used, but is more difficult to install.)

NOTE: When handling the liner, be sure to always wear gloves.

Before installing the liner, you will have to determine what length you will need. To do this, measure from the top of your fireplace chimney to the top of the fireplace. (If there are offsets involved, you will need to take them into consideration when determining your liner length.)

NOTE: Add 1.5' (feet) to your calculated length to allow for enough liner to connect to the Premier Answer unit.

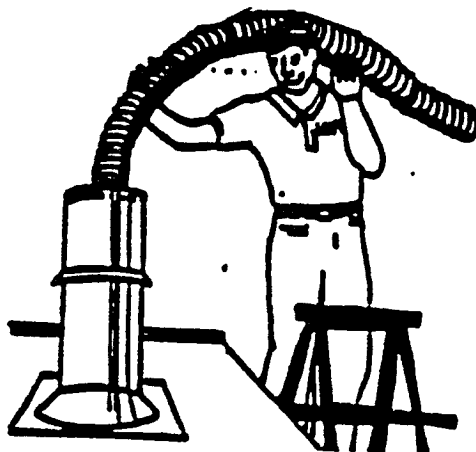
Contact your local dealer for information on where to obtain the proper liner for your installation.

Once you have obtained the liner, you are ready to start your installation.

First, from the roof, remove the chimney cap.

NOTE: It is a good idea to have your chimney inspected and cleaned prior to installing the liner.

Next, slide the liner down through the chimney (See drawing below).



NOTE: Slide the liner down very slowly, making sure not to dismantle or damage any of the existing chimney. Twisting the liner will help by-pass seams and offsets.

It is easier to work from the top down. If this is not possible, the liner can be installed from the bottom up.

Once you have gotten the liner through the chimney, you are ready to install the Premier Answer Insert.

NOTE: Be sure to secure the liner at the top so it will not fall down into the fireplace.

NOTE: Make sure there is sufficient liner hanging down into the fireplace to connect to the Premier Answer unit. About one foot of liner length will be needed. This may vary depending on the fireplace brand and size.

Step #3.

Lift the chimney block off plate and slide it up into place over the 6" liner. Secure it with the 4-1/8" sheet metal screws provided in the Z.C. Kit through the mounting holes (See Figure 9A).

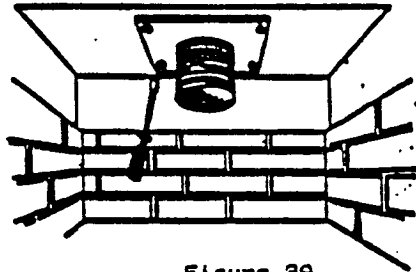


Figure 9A

Next, depending if you use a top vent or rear vent configuration, you will need to trim the liner to the proper length using a hacksaw.

Next, slide the Premier Answer unit into position in the fireplace and level (See Figures 9B and 9C).

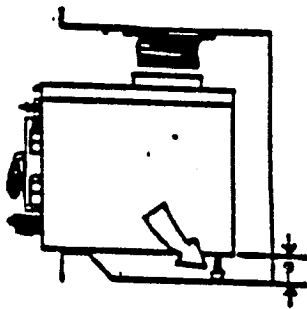


Figure 9B

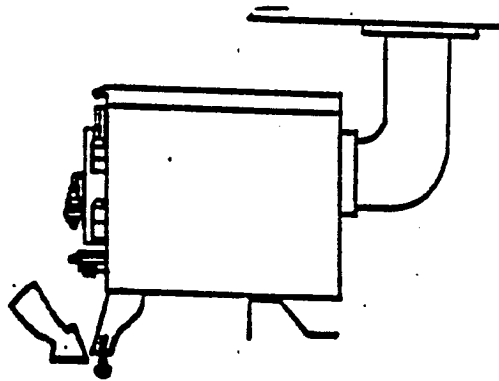


Figure 9C

NOTE: It may be required that the Flue Collar on the Premier Answer unit be installed after it is placed into the fireplace opening.

(Figure 9C) shows the installation and leveling of a rear unit configuration using the front leveling legs.

NOTE: When positioning your Premier Answer Insert, please take note that the chimney liner must stay as vertical as possible.

Once the Premier Answer Insert is in position and leveled, connect the 6" liner to the unit and secure with the 3/16 x 1" sheet metal screws provided in the Z.C. Kit through the holes in the flue collar (As shown in Figure #10A).

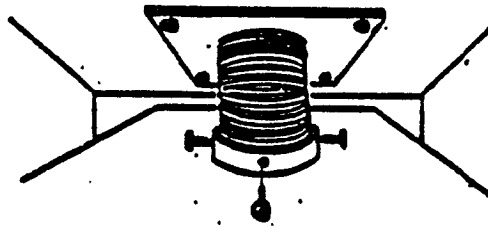


Figure 10A

Next, from the roof, trim off any excess liner with tin snips or hacksaw. The liner should not protrude more than 2" above the chimney.

NOTE: Use holes ("Q" in Figure #10B) to secure bracket to liner.

Once the liner has been trimmed back to the proper height, use the provided support bracket to support the chimney liner. To do this, center the liner and secure the bracket as shown (See Figures #10C and #10D).

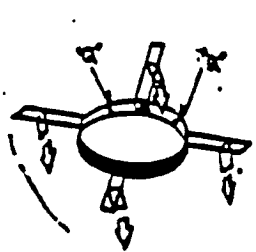


Figure #10B

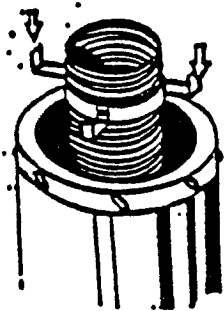


Figure #10C

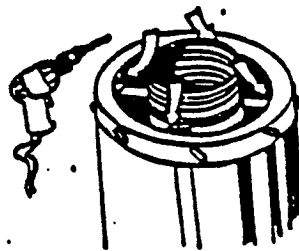


Figure #10D

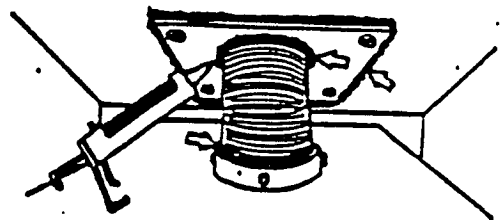


Figure #11

Replace and secure the chimney cap to its original position.

Finally, from inside of the fireplace, seal around the liner using fireplace cement at the inner and outer edges of the block off plate (See Figure #11). This will prevent the possibility of any air leakage or backdrafting. At this point, your unit is safely installed and operational.

OPTIONAL PANEL INSTALLATION

Once the Premier Answer unit is in position in the fireplace, you are ready to install the panels which will complete the installation and cover the gap between the edge of the fireplace and the Answer Insert.

To install the panels, first measure out from the face of the Zero Clearance Fireplace $1/2$ " and mark this position on both sides of the unit. From this point mark a vertical line down both sides of the unit. Next measure from the base of the unit up along the drawn line $3-5/8$ ". Mark this position. Now from the base of the unit, measure up the drawn line $13-5/8$ " and mark this position. Repeat these steps on the other side of the unit. You have now marked the positions of the panel mounting holes (Figure #12A).

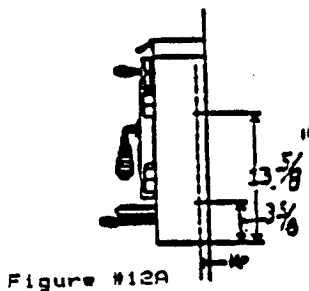


Figure #12A

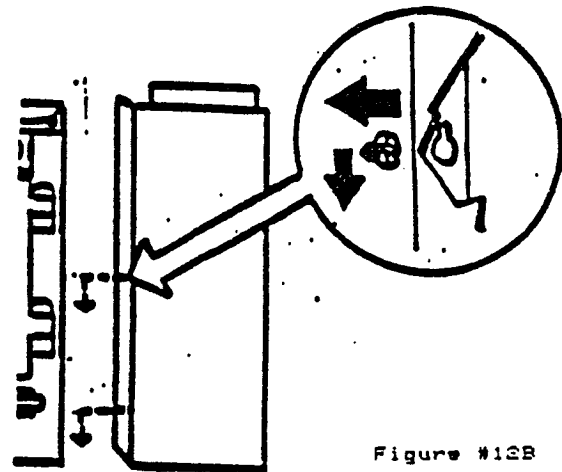


Figure #12B

Now using a $15/64$ drill bit, drill through the sides of the unit at the 4 marked positions. Find the four self tapping panel screws located in the panel box and screw them into place until there is only about a $1/8$ " gap between the head of the screw and the side of the unit. Next, place the side panels into position as shown in Figure #12B. The panels should lock into place tightly, if not, readjust the screws.

Now, place the top panel into position as shown in Figure #13A.

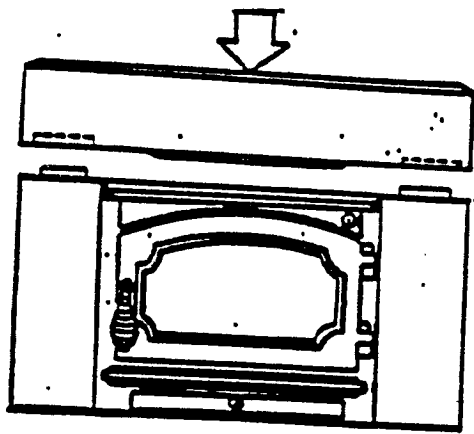
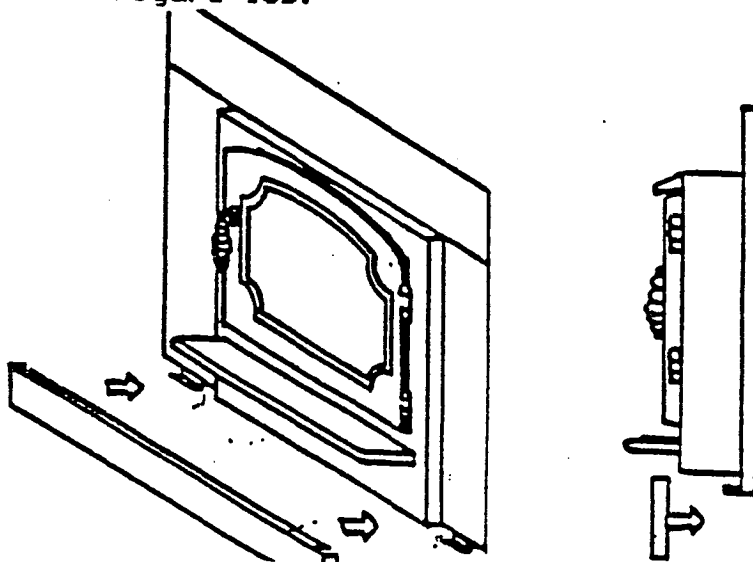


Figure #13A

If your fireplace is raised, you may wish to use the lower panel piece provided. To do this, position the panel into place under the unit. Align the panel in place and slide it into the clips as shown in Figure 13B.



TRIM INSTALLATION:

The last piece you will be installing is the brass trim. The brass trim is designed to accommodate the lower panel. If it is not used, you will need to trim off the excess brass trim that is protruding below the bottom of the side panels using a hacksaw.

Install brass trim as shown in Figure #14.

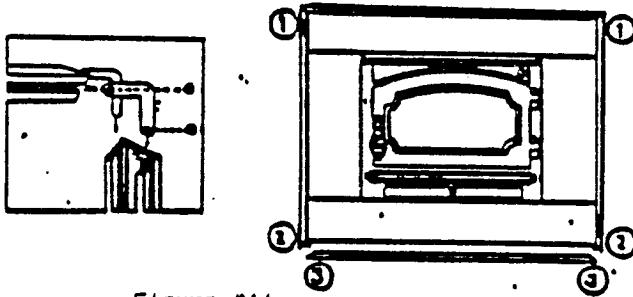


Figure #14

1. Assemble the top and side trim pieces first. If you are not going to use the bottom panel, measure and trim the excess trim off the side lengths. Slide trim over panels to secure.

2. If you are using the bottom panel and trim pieces, first assemble the top and sides and slide these over the panels.

Next, pull the unit out of the fireplace slightly (only enough to get you hand behind to tighten set screw) to allow access to the back of the panels. Secure the securing "L"s onto the bottom trim piece into position by spreading the side trim legs apart and sliding the trim pieces together. Now secure together with the remaining allen set screws.

To finish, push unit back into position, being careful not to damage liner.

OPERATION

To learn the proper operation and maintenance of your newly purchased and installed LOPI woodstove, please completely read the following operation instructions. You may wish to highlight portions for easy referral in areas that you are unfamiliar with. It is recommended that you keep this manual as a handy reference guide for questions that may arise in the future as varying conditions can greatly alter the way your woodstove burns.

The more familiar you become with your new LOPI stove the more enjoyment you will experience from being able to operate it at its peak level.

Wishing you many years of warmth and satisfaction from your LOPI!!!

When your installation has been completed and inspected, you are ready to build your first fire.

THERMOMETER

Purchasing a stove thermometer is highly recommended for monitoring the stove temperature. On an insert the thermometer should be located on the firebox top about 2" from the panels. On the freestanding stove the thermometer should be placed on the top of the unit, about 2" in front of the flue collar.

STOVE TOP TEMPERATURES

Approximate burning temperatures for a LOW BURN MODE (overnight burn) is 200-400 degrees Farenheit. MEDIUM BURN MODE is 400-600 degrees Farenheit and HIGH BURN MODE is 600-800 degrees Farenheit. It is recommended that the stove be burned very hot (850 degrees F.) for approximately 30 minutes in order to burn the creosote out of the firebox, flue and off the glass after an overnight or low burn. The burn mode recommended for normal operation, achieving a high efficiency level, is medium-high.

It will probably take a couple of weeks to become familiar with what settings achieve the desired burning temperatures. There is no set position on the draft control as each persons installation and wood type varies.

SEASONING THE PAINT

For the first few days the stove, and pipe if freestanding will give off an odor and a small amount of smoke. This is to be expected as the high temperature paint becomes seasoned to the metal. Do not burn the stove over a medium burn for the first few days to allow the seasoning to take place. High temperatures will damage the paint. During the first few days allow adequate ventilation for smoke and odor.

NOTE: TO PREVENT THE DOOR GASKETING FROM STICKING TO THE SEASONING PAINT OPEN THE LOADING DOORS "SLOWLY" AND OFTEN DURING THE FIRST WEEK OF OPERATION.

PREMIER ANSWER FIRST FIRE:

Your Premier Answer is equipped with one draft (combustion air) control handle located under the ashlip. It is operated with a simple push/pull movement . When the handle is pulled out it is in the full off(closed) position. When the handle is pushed in it is in the full open position.

The draft control handle regulates the primary and secondary combustion air.

1. Open the draft control and the optional damper control to the full open position.
2. Open the loading door and build a small fire by using paper and kindling . Secure the door and wait for an updraft to establish, (you may be required to leave the door open a small amount at first to establish an updraft. Continue to add small amounts of kindling until a firm layer of coals have developed about 1 to 2 inches thick.

NOTE: During the first few days of operation it may be a little more difficult to start the fire as the bricks will contain moisture. As the bricks dry out and a small ash bed is developed the fire will become easier to start.

3. Place two or three thoroughly dried logs on the hot coals and reseal the door .
4. After about 35 to 40 minutes the wood should begin to burn intensely. After about one hour the stove should reach optimum burning conditions (this may take longer at high elevation areas). At this point ,the stove can be dampered down by closing the optional damper control and adjusting the draft control to achieve your desired burn rate.
5. For the first few fires keep the combustion rate at a MEDIUM burn rate . Avoid burning fires with the draft and damper controls open for long periods of time this will result in a very hot fire with most of the heat escaping up the chimney flue.

WARNINGS FOR ALL STOVES:

NEVER BUILD A ROARING FIRE IN A COLD STOVE. ALWAYS WARM YOUR STOVE UP SLOWLY TO A MODERATE LEVEL.

NEVER OPEN LOADING DOORS OF A BURNING STOVE WHEN THE COMBUSTION AIR INLETS HAVE BEEN CLOSED. DOING SO COULD RESULT IN A SUDDEN FLASH OF FLAME AS THE FIRE RE-IGNITES. ALWAYS OPEN DRAFT AND DAMPER CONTROLS BEFORE OPENING LOADING DOORS.

ALWAYS OPEN THE DOOR SLIGHTLY ABOUT HALF AN INCH OR SO AND WAIT A MINUTE. THIS WILL ALLOW THE PRESSURE INSIDE THE CONTROLLED COMBUSTION FIREBOX TO EQUALIZE WITH THE ROOM PRESSURE AND REDUCE THE POSSIBILITY OF SMOKE POURING INTO THE ROOM.

MANY NEWER HOMES ARE BUILT AIR TIGHT TO CONSERVE ENERGY. IN THESE CASES, FRESH AIR FROM THE OUTSIDE MUST BE PROVIDED IN THE FORM OF A COMBUSTION AIR INLET. VENTILATION IS NEEDED NOT JUST FOR PROPER COMBUSTION, BUT FOR THE OCCUPANTS OF A HOME. IN MOST HOMES THERE IS AIR LEAKAGE SUFFICIENT TO SUPPORT STOVE COMBUSTION. IN WELL INSULATED "TIGHT" HOMES, PROPER DRAFT FOR STOVE BURNING CANNOT BE ACHIEVED WITHOUT VENTILATION. IT IS ADVISABLE UNDER ALL CONDITIONS TO LEAVE THE COMBUSTION AIR INLET OR A WINDOW SLIGHTLY OPEN TO ALLOW A CONSTANT SOURCE OF AIR WHEN YOUR STOVE IS IN OPERATION.

IT IS NORMAL FOR A STOVE TO MAKE POPPING AND CRACKING NOISES AS IT EXPANDS DURING THE "HEATING UP" PROCESS. THESE NOISES SHOULD BE MINIMAL ONCE OPERATING TEMPERATURES ARE REACHED.

ARTIFICIAL FIRE LOGS AND MANUFACTURED COAL BRICKS ARE NOT RECOMMENDED FOR USE IN YOUR LOPI.

Now that you are aware of how your controls are operated and the proper technique for the start-up and first fire of your stove you are ready to learn more about the fuel used - wood.

WOOD

Choosing the kind of firewood to burn in your stove depends on what is available to you. If all you can obtain is softwoods, obviously, that will be your choice.

Softwoods such as pine and fir are easily ignited and burn rapidly with hot flames. But, since they burn so easily and quickly you will have to spend more time loading your firebox, especially in the high burn mode. With softwoods it will be much more difficult to achieve an overnight burn.

If you do have a choice it is best to use the more dense hardwoods for a longer lasting fire. Also, it is a good idea once the fire is established to use large diameter logs stacked tightly together. This will promote a longer burn time.

The ultimate arrangement would be to have a mix of softwoods and hardwoods. This way you could use the softwood for ease in startup and the hardwood for longer burn times.

So that you have an idea of how firewood is sold, you should first know that the most common measurement is the standard "cord". A cord is a nicely stacked pile of logs measuring, 4 feet by 4 feet by 8 feet. ALWAYS look for the driest wood especially if you must purchase wood by weight. Unseasoned, wet wood is much heavier.

AVERAGE HOURS PER CORD

SPECIES	WEIGHT PER CORD	BTU'S PER CORD	HR/PER CORD AT 40K BTU'S PER HOUR
ALDER	2540	29,050,000	476
APPLE	4400	33,000,000	825
ASH	3440	25,800,000	645
BIRCH, WHITE	3040	22,800,000	705
CEDAR	2060	15,450,000	386
COTTONWOOD	2160	16,200,000	405
DOGWOOD	4230	31,725,000	793
ELM	2260	16,950,000	424
FIR, DOUG	2970	22,275,000	557
HEMLOCK	2700	20,250,000	506
MAPLE, RED	3200	24,000,000	600
OAK, RED	3680	27,600,000	690
OAK, WHITE	4200	31,500,000	788
PINE, WHITE	2250	16,875,000	422
REDWOOD	2400	18,000,000	450
SPRUCE, NORWAY	2240	16,800,000	420

***** At 20% moisture content

BURN DRY, SEASONED WOOD

Moisture content of the wood affects the way any stove operates. Well seasoned wood (split, stacked and kept dry for at least 6 months) is your best fuel choice.

Wet wood will not burn as efficiently as dry seasoned wood. You will receive less heat output from a wet piece of wood because it takes energy to evaporate the water, energy that should be used for heating your home. When a wet piece of wood is placed in your stove it will also cause more creosote deposit on the glass and in the stove flue and chimney. The primary reason for this is as the water evaporates from the wood it will "spit" creosote-like material. If you can hear your wood sizzle or you can see moisture bubbling from the ends of the logs placed in a hot stove, your wood is too wet!!!!

Another big advantage to burning seasoned wood, aside from higher efficiency and less creosote, **LESS POLLUTION!!**

Your wood should be stored in a well sheltered, ventilated area to allow proper drying during the year to come. This is necessary even if you've purchased seasoned wood.

NOTE: Be careful not to dislodge the firebrick baffle when loading your firebox.

CREOSOTE

Creosote is a tarry liquid or solid resulting from the distilling of wood during the combustion system. Using wet wood or burning at lower temperatures will result in a heavier creosote buildup. Creosote vapors will condense in a relatively cool chimney flue of a slow burning fire. As a result, creosote residue accumulates on the interior surface of the chimney and flue pipes, considerably reducing their diameter. When ignited, this creosote makes an extremely hot and dangerous fire. The chimney should be inspected at least once every 2 months during the heating season to determine if a creosote build-up of approximately 1/4" has accumulated. If this is the case, the creosote should be removed to reduce the risk of a chimney fire.

Most problems with creosote are due to chimneys with poor draft and cold walls, and to a low rate of burning when little heat is needed during the spring and fall months. Burning green and resinous wood also creates creosote.

WAYS TO PREVENT AND KEEP UNIT FREE OF CREOSOTE

1. Burn your stove with draft and damper controls wide open for about 35-45 minutes daily during the burning season (950 degrees F.). This will burn out creosote deposits within the heating system.

2. Burn the stove with draft and damper controls wide open for about 20 minutes every time you apply fresh wood. This allows wood to achieve the charcoal stage faster and burns wood vapors which might otherwise be deposited within the system.
3. **BURN ONLY SEASONED WOOD:** Avoid burning wet or green wood. Seasoned wood has been dried at least one year.
4. A small more intense fire is preferable to a large smoldering one that will deposit creosote within the system.
5. Never completely close the damper control while the unit is in operation. Closing the control while burning will allow unburned gas vapors to escape and be deposited within the chimney.
6. Establish a routine for using your new stove. Check daily for creosote build-up until experience shows how often you need to clean it to be safe. Be aware that the hotter the fire, the less creosote is deposited on the glass and chimney system. Weekly inspection and cleaning may be necessary during times of heavy stove use. Contact your local fire authority for information on how to handle a chimney fire. Have a clearly understood plan to handle such a fire
7. Have your chimney system and unit cleaned by a CERTIFIED chimney sweep twice a year during your first burning season, and at least once a year thereafter.

WARNING: THINGS TO REMEMBER IN CASE OF A CHIMNEY FIRE:

1. CLOSE ALL DRAFT AND DAMPER CONTROLS.
2. DO NOT OPEN LOADING DOORS.
3. CALL THE FIRE DEPARTMENT.

BURNING YOUR STOVE EFFICIENTLY

Your LOPI woodstove is designed to heat your home as efficiently as possible with the lowest amount of creosote build-up and pollutants being emitted. There are a few things you can do to aid in this...

On cold days, when you wish for high heat output from your stove, load the stove fully after the fire has been established and burn at a medium-high to high burn mode. When a comfortable heat level in your home has been reached, subsequent loadings should be of lesser amounts of wood. On warmer days, burn smaller fires (using less wood). This method will give you the most efficient burn possible from your LOPI.

Although the fire will burn longer at a lower setting your stove will not produce as much heat and it will leave the stove, chimney and glass sooted along with emitting a larger amount of pollutants into the environment.

For an overnight burn establish a well burning fire. Before you are ready to retire recharge the stove with wood. With the controls in the fully open position let the fire burn intensely for 20-30 minutes. Next, close the damper and adjust the draft control so that a low, lazy flame is visible. In the overnight burn you should be able to maintain a fire about 6-9 hours (depending on wood type used) and have a coal bed, left to start the morning fire. After an overnight burn, to re-establish a fire, open the controls fully and stir the ashes to bring the hot coals to the surface. Then, follow instructions under "first fire". Remember, if you dampen the fire down too low you will not only lower the heat output but you'll be promoting creosote build-up. It will take a few days practice to achieve the desired setting.

CHIMNEY SIZE AND PROPER DRAFT

The performance of your unit depends a great deal on the type and size of your chimney and connector as well as its location. Your dealer should have covered the importance of this when you purchased your unit.

The diameter of your pipe should match the flue opening for optimum performance. If you own the 380/440 freestanding stove or the Premier Answer series it is recommended that you have a 6" pipe installed. If you own the Flex freestanding stove an 8" pipe is recommended. A factory-built chimney and connector is most commonly used with a freestanding stove as they are easier and usually less expensive to install than constructing a masonry chimney.

If you own an insert you will want to make sure that your existing fireplace is in sound condition and has a proper and correctly sized flue. The Premier Answer insert has a 6" flue opening. The Flex LX and FL inserts have an 8" flue opening. If the flue opening of your fireplace is too large you will not be able to reach optimum burning temperatures with your insert and you may experience smoke feedback. This is because the large flue opening will not heat up enough to provide sufficient draft for your unit.

If you experience problems check for the following and correct:

1. Leaky Chimney. Air leaking around a loose fitting cleanout door, flue pipe joints not tight or defective masonry.
2. Chimney improper height—your chimney must extend above the roof to the proper height in order to promote sufficient draft. If it does not you will experience a slow burn and smoke feedback. The chimney should extend at least 3 feet above flat pitched roofs. On pitched roofs, chimneys should be at least three feet higher than any point on the roof within 10 feet. A high chimney produces better draft and reduces chances of down drafts caused by wind being deflected from the roof.

3. Chimney size- If your masonry chimney is too large or small it will not adequately vent your stove. Minimum height 15 feet; minimum inside diameter 6 inches. The diameter should be sized appropriately for your model of stove.

4. Obstructions-your chimney should be examined regularly for creosote build-up or other obstructions. If you have a chimney cap be certain to check this also.

5. Elbow Restrictions-If your flue pipe connector has too many elbows this will reduce the draft. Whenever possible there should be NO elbows. The connector should be as short and straight as possible and enter the chimney higher than the outlet on the stove. Avoid long horizontal runs. Instead use adjustable elbows if needed, to create an upward slope to the pipe.

6. Cold air block - If your chimney and/or connector pipe is located outside of your home it will not heat up as well, especially under cold weather conditions, promoting a slower draft.

7. Trees or other Topographical Barriers-this will hinder the operation possibly causing a down draft or slow insufficient draft to take place.

Most importantly keep your chimney free of creosote. It will reduce the possibility of a chimney fire!

DO NOT use the chimney if it is unlined. Also DO NOT connect the insert to a chimney system serving another appliance.

ASH DISPOSAL

LOFI stoves feature a convenient ashlip for easy ash removal. During constant use ashes should be removed every few days. DO NOT ALLOW ASHES TO BUILD UP TO THE LOADING DOOR. Only remove ashes when fire is completely out. Even then expect to find a few hot coals. When disposing of ashes ALWAYS place them in a metal container with a tight fitting lid. REMEMBER TO KEEP ASH BUILD UP TO A MINIMUM NEVER ALLOW ASHES TO BUILD UP IN FRONT OF THE DOOR OR PRIMARY AIR ENTRY AT THE FRONT OF THE STOVE.

OPTIONAL FAN OPERATION

All fans have a built in thermostat which allows for the unattended operation of the fan.

The fans have two speed settings and three function settings. The speed settings are "RUN" and "STARTUP". The function settings are "OFF", "ON" and "AUTO".

When first starting your stove you should set your fan to the "STARTUP"- "AUTO" setting this will give you maximum air flow to warm your home up quickly. When the stove reaches operating temperature the fan should be set to the "AUTO"- "RUN" setting. This setting will give you smooth quiet operation with maximum efficiency.

GENERAL MAINTENANCE

FAN MAINTENANCE

You should remove your fan from the unit at least twice a year for cleaning. Dust will accumulate on the fan cover as well as the fan motor and impellers. These parts should be cleaned to insure adequate flow of air and minimize strain on the motor. At this time the motor should be lubricated using a light gauge machine oil (i.e. sewing machine oil).

STOVE MAINTENANCE

It is highly recommended that you periodically lubricate any moving parts such as the door hinges, draft, damper and start-up control rods. This will eliminate any scraping or squeaking noises as well as allow the parts to move more freely. A high temperature lubricant (i.e. Permatex Industrial (R) anti-seize lubricant) is required for this. Graphite or low temperature lubricants will only last for a few days.

At the end of each heating season, remove all ashes from your stove. With a wire brush remove any scale on the inside of the firebox. Replace any broken firebrick, worn glass, and door gasketing material. The exterior of the stove can be touched up using high temperature "Forrest" paint, available at your LOPI dealer. To touch up paint, first sand the area to be painted with 120 grit sandpaper, clean with water only and dry with a clean cloth. Paint using a "light" covering coat. The area painted may appear darker until the paint has gone through the curing process described on page 2.

BRASS MAINTENANCE

If your unit is purchased with solid brass door(s), and plated brass ashlip or panel trim, be sure to use only brass cleaner approved by LOPI, purchased at your LOPI dealer. DO NOT UNDER ANY CIRCUMSTANCES CLEAN BRASS WITH AN ABRASIVE CLEANER.

GLASS MAINTENANCE

Should soot or creosote occur on the glass during operation, clean when the stove is cold with a non-abrasive glass cleaner available through your stove dealer. Creosote deposits on the glass indicate the wood being burned is not properly seasoned or that the stove is being burned at low temperatures. Remember to fire at a medium-high burn mode, because dampering the unit down too low will result in a low burning, smoldering fire that can deposit creosote throughout the system.

If the glass should break, wait until the stove and glass is cool before removing.

JUNE 1988

TO LOPI OWNERS:

TRAVIS INDUSTRIES, INC. warrants LOPI woodstoves, hearth heaters and fireplace inserts to be defect-free in material and workmanship for five (5) years from the date of purchase, with the exception of the unit's fan, which is warranted for one (1) year from the date of purchase to be defect free in material and workmanship.

Exclusions to this limited warranty include: Injury malfunction of the product, loss, damage, defect, failure to function due to accident, negligence, misuse, improper installation, lack of proper and regular maintenance, damage incurred while the unit is in transit, alteration, or act of God. In addition, this warranty excludes paint discoloration, chipping paint, firebricks, glass and gasketing.

This limited warranty excludes damage caused by normal wear and tear, such as paint discoloration or chipping, worn or torn gasketing, eroded or cracked firebricks, etc. Also excluded is damage to the unit caused by abuse, improper installation or use not set forth in the LOPI Owner's Manual. Creating an overfired condition in the unit voids this warranty. An overfired condition is defined as a condition in which the unit is allowed to glow red. Warped metal parts and discolored or burned-off paint result from an over fired condition.

TRAVIS INDUSTRIES, INC. is free of liability for any damages caused by the unit, as well as inconvenience expenses, material and labor charges incurred by the removal or reinstallation of any LOPI unit. Incidental or consequential damages are not covered by this warranty. In some states, the exclusion of incidental or consequential damage may not apply.

Only the original purchaser of a LOPI appliance is covered by this warranty. If the unit is used for commercial purposes, it is excluded from this warranty.

This warranty does not cover any loss or damage incurred by the use or removal of any component or apparatus to or from the LOPI unit without the express written permission of TRAVIS INDUSTRIES, INC. This includes the use of any fan not approved by TRAVIS INDUSTRIES, INC and bearing a TRAVIS INDUSTRIES, INC. label of approval.

No dealer, distributor, or similar person has the authority to represent or warrant LOPI products beyond the terms contained within this warranty. TRAVIS INDUSTRIES, INC. assumes no liability for such warranties or representations.

Any statement or representation of LOPI products and their performance contained in LOPI advertising, packaging literature, or printed material is not part of this limited warranty.

To replace the glass, simply remove the door and unscrew the glass retainer. Replace the broken glass with only LOPI's Glass Kit, available at all authorized LOPI Dealers. The replacement glass is high temperature, high shock glass of Corning Pyroceram(R) or Technical Neoceram(R) (5mm thick). Under normal operating conditions the glass will not break.

This warranty is automatically voided if the unit's serial number has been removed or altered in any way.

This warranty is limited to the time frame set forth above. In some states, time limitations on warranties do not apply.

TRAVIS INDUSTRIES, INC. LIMITED FIVE YEAR WARRANTY

THIS LIMITED WARRANTY IS THE ONLY WARRANTY SUPPLIED BY TRAVIS, THE MANUFACTURER OF THE UNITS. ALL OTHER WARRANTIES, WHETHER EXPRESS OR IMPLIED, ARE HEREBY EXPRESSLY DISCLAIMED AND PURCHASER'S RECOURSE IS EXPRESSLY LIMITED TO THE WARRANTIES SET FORTH HEREIN.

HOW TO USE YOUR LOPI FIVE YEAR WARRANTY: If you find your unit to be defective in workmanship or material within a 5 year period from the date purchased contact your local authorized LOPI dealer. If your dealer is unable to repair your units defect, he may process a warranty claim through TRAVIS INDUSTRIES, INC., including the name of the dealership where you purchased the unit, your receipt showing the date of the units purchased, and the serial number on your unit. At that time, you will be asked to ship your unit, freight charges prepaid, to TRAVIS INDUSTRIES, INC. TRAVIS, at its option, will repair or replace, free of charge, your LOPI unit if it is found to be defective in material or workmanship within the time frame stated within this limited warranty. In addition, TRAVIS will refurbish your unit at no charge to you, restoring its appearance and condition. TRAVIS INDUSTRIES, INC. will ship your unit, freight charges prepaid by TRAVIS, to your regional distributor, or your dealership, whichever you find more convenient.

To register your TRAVIS INDUSTRIES, INC. Five Year Warranty, complete the enclosed warranty card and mail it within ten (10) days of the unit purchase date to: TRAVIS INDUSTRIES, INC., 10850 117th FL N.E., Kirkland, WA 98033.

OTHER RIGHTS: This warranty provides you with certain legal rights. You may have additional rights, which vary from state to state, in regards to this warranty.

UNIT SERIAL NUMBER _____

DATE OF PURCHASE _____

DEALER NAME & ADDRESS WHERE UNIT WAS PURCHASED _____

(Complete the above information, and save this page, with purchase receipt, for your records).

TRAVIS INDUSTRIES, INC.
10850 117TH FL N.E.,
KIRKLAND, WA 98033